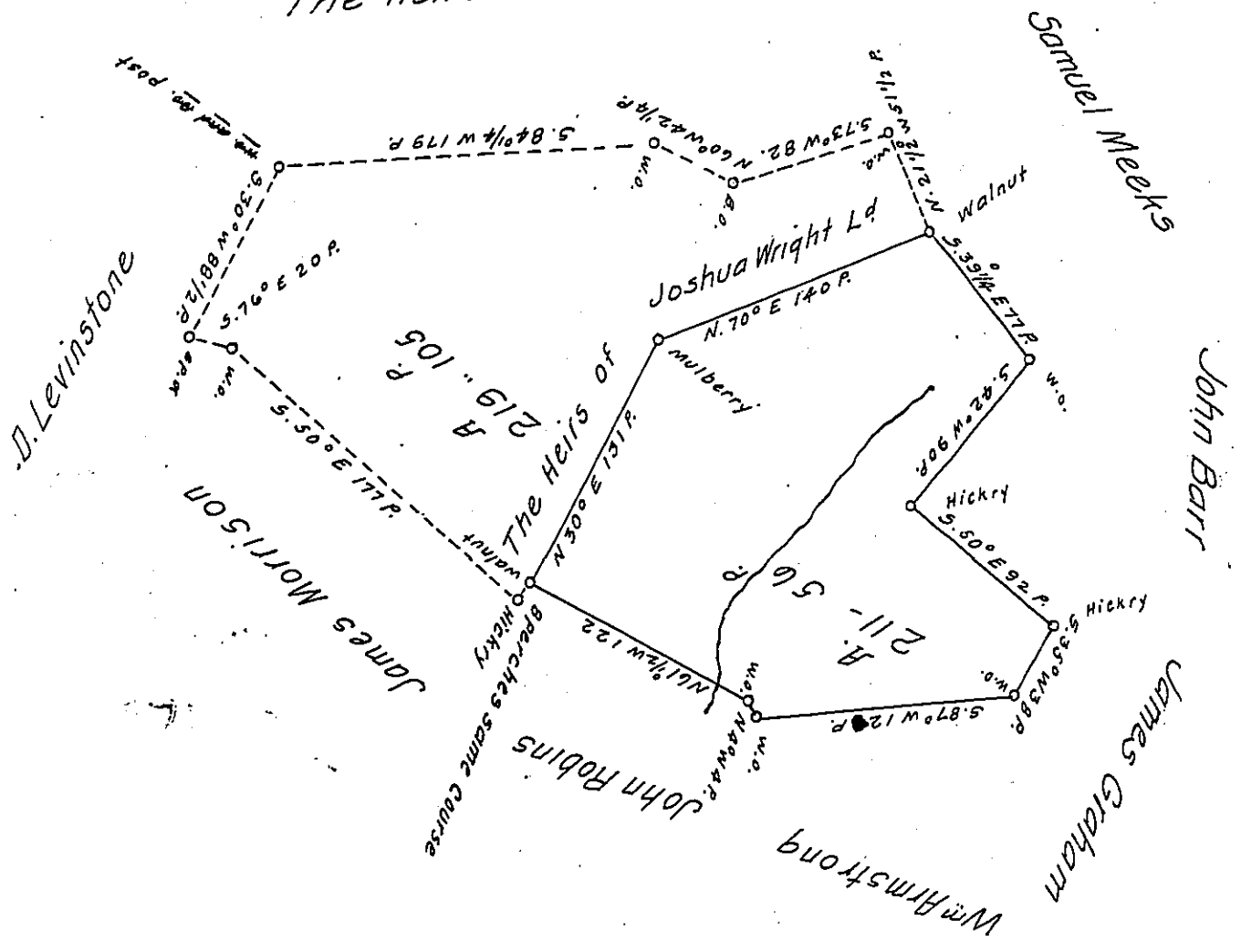


SAW P-59-420

SAW C140-155

The Heirs of Joshua Wright



The above is a draught of a survey situate on the waters of Mingo and Peters Creek. Surveyed June 20th 1787. By Virtue of a Warrant for Patrick O'Farrin and contains in the whole 431 acres with the allowance. what is within the Black lines is free of dispute. what is within the dotted lines interferes with a survey which I made made for the Heirs of Joshua Wright - S^d O'Farrin has entered a Cavett against wright's survey - and the dotted lines is to shew how far O'Farrin Claims in wright's survey &c.

IN TESTIMONY that the above is a copy of the original remaining on file in the Department of Internal Affairs of Pennsylvania, made conformably to an Act of Assembly approved the 16th day of February, 1833, I have hereunto set my Hand and caused the Seal of said Department to be affixed at Harrisburg, this sixteenth day of April 1908.

Henry Horvath
Secretary of Internal Affairs.